

Background

The **Face-Seal Kit (FSK)** (1) is a modular accessory for the **AYO™ WX Full-Face Mask (FFM)** and is compatible with both **Full-Face Mask Loose-Fitting (FFM-LF)** (2) and **Full-Face Mask Double-Seal (FFM-DS)** configurations.

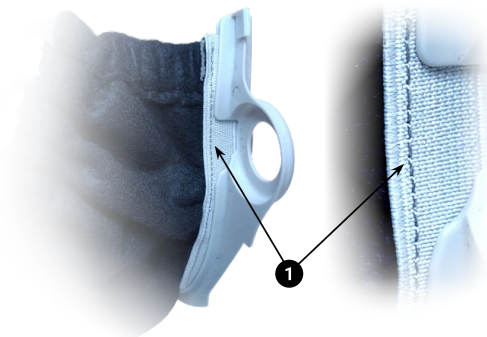
This Guide will illustrate the steps to correctly attach the **FSK** onto **FFM-DS** or **FFM-LF** configuration to produce the full **FFM-DS/FSK** or **FFM-LF/FSK** mask assembly.



1. Assemble the **FSK** by slotting the *face-seal* into the *bracket*. Ensure the seam (1) is facing the user in the orientation below.

2. Flip the *face-seal* to the other (convex) side of the *bracket* while keeping the elastic strip slotted.

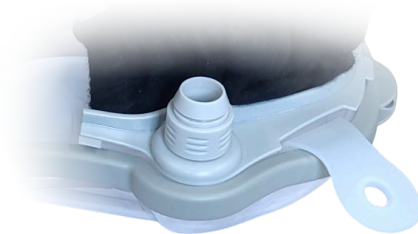
3. Unfasten the two *threaded plugs* (1) on either side of the **FFM** to expose the *threaded connectors* (2).



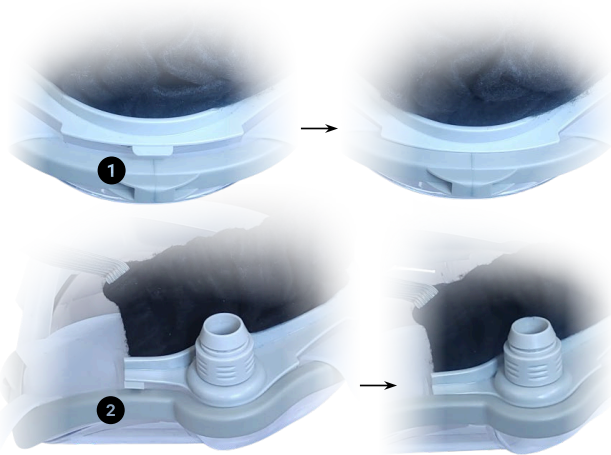
4. Position the **FSK** onto the **FFM** and push the *threaded connectors* through the *bracket holes*!



5. Loosely fasten the *threaded plugs* from Step 2. Ensure there is some play to wiggle the **FSK**.



6. Slot the anchor tabs of the **FSK bracket** under the frame of the **FFM**. It is recommended to do the bottom tab (1) first before the side tabs (2).



7. Fasten the *threaded plugs* the rest of the way² and take the *face-seal elastic backstrap* (1) over and around the silicone headstrap before adhering the Velcro.



8. Don the complete **FFM** mask assembly and pull down on the tab (1) to maximise the *face-seal's* coverage of the face.



9. Adjust the *face-seal elastic backstrap* as required to achieve best seal and comfort



Note:

1. For the **FFM-LF** configuration, it's advisable to reach into the **FFM**, under the silicone face cushion and mask frame, and support the *threaded connectors* from the back so that fitting the **FSK** doesn't push the *threaded connectors* out of position.
2. The **FSK bracket** may not be completely flush with the **FFM** frame as the fabric may be wedging them apart. If this is the case, press the *bracket* firmly along its length so it sits in close contact with the silicone and near flush with the **FFM** frame.